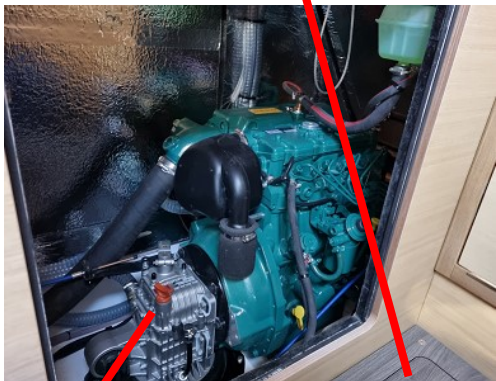
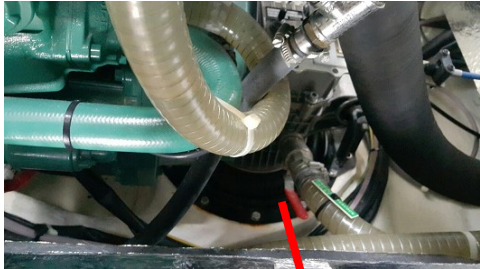
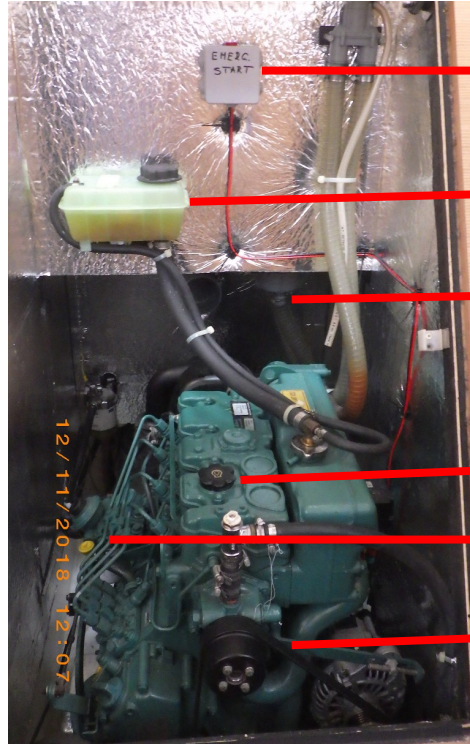


13. ENGINE AND PROPELLER INSTALLATION

IMPRESSION 45.1 are equipped with a VOLVO D2-50 engine - sail drive version. The engine runs on normal diesel fuel. It is cooled with seawater in a closed cooling circuit. Access to the engine is possible from the front by lifting the companionway and via the engine compartment cover in the aft cabins or head compartment.



Engine cooling water inlet
Gear oil refill and dipstick



Emergine start

Coolant reservoir
Oil refill

Sea water filter

Oil refill

Oil dipstick

Engine belt

14. FUEL SYSTEM

The fuel tank has a capacity of 250 liters. The fuel tank is stowed under the galley floor. Fuel tank is accessed from the saloon by lifting the floor panels.

Filling the fuel tank:

Fill the fuel tank with diesel via the deck filler located on the middle of starboard deck



- The fuel filler is marked "DIESEL". Unscrew the plug using a winch handle.
- Before filling the tank, close the portlights in vicinity of the fuel filler.
- Fill the fuel tank slowly in order to avoid spilling fuel on the deck.
- In case of spilling fuel on the deck, clean it immediately using a detergent and a large amount of fresh water.
- Keep the fuel tank full because a low fuel level can cause air penetration and improper engine operation and stoppage.
- Close the fuel filler carefully and screw it tight.

When filling the tank, turn off the engine and do not smoke